



*Simple Yet Sophisticated*



THE SYSTEM 2450™

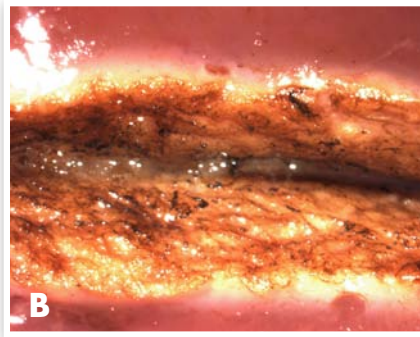
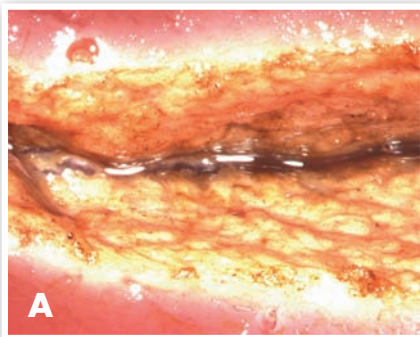
# THE SYSTEM 2450™

*Simple Yet Sophisticated*

The System 2450™, a member of ConMed's family of electro-surgical generators, provides state-of-the-art innovation in an easy-to-use format. The System 2450 is simple on the outside, yet sophisticated and powerful on the inside.

## Dynamic Response Technology

The System 2450 incorporates ConMed's Dynamic Response technology, the most advanced generator design on the market. Dynamic Response reacts to changes in tissue in less than 10 milliseconds ensuring the delivery of the desired amount of power while limiting the chances of thermal damage to surrounding tissue. Generators without Dynamic Response can produce more arcing and potentially more damage to the surrounding area.



Comparison of Pure Cut at 50 watts on bovine liver. A. ConMed's System 2450 ESU. B. Competitor's ESU. Less charring occurs with The System 2450's Dynamic Response technology.

## Smooth Cutting

The System 2450 offers smooth cutting through different tissue types, offering both:

- » **Cut** – for scalpel-like cuts
- » **Blend** – for hemostasis while cutting

## Powerful Coagulation

The System 2450 provides powerful coagulation for both dissection and hemostasis. Choose either:

- » **Standard** – for dissection with hemostasis
- » **Spray** – for broader hemostasis

## Precise Bipolar Dessication

The System 2450 provides efficient dessication with minimal lateral thermal tissue damage. Choose:

- » **Micro** – for fine and precise coagulation
- » **Macro** – for more energy-intensive coagulation

## Safe

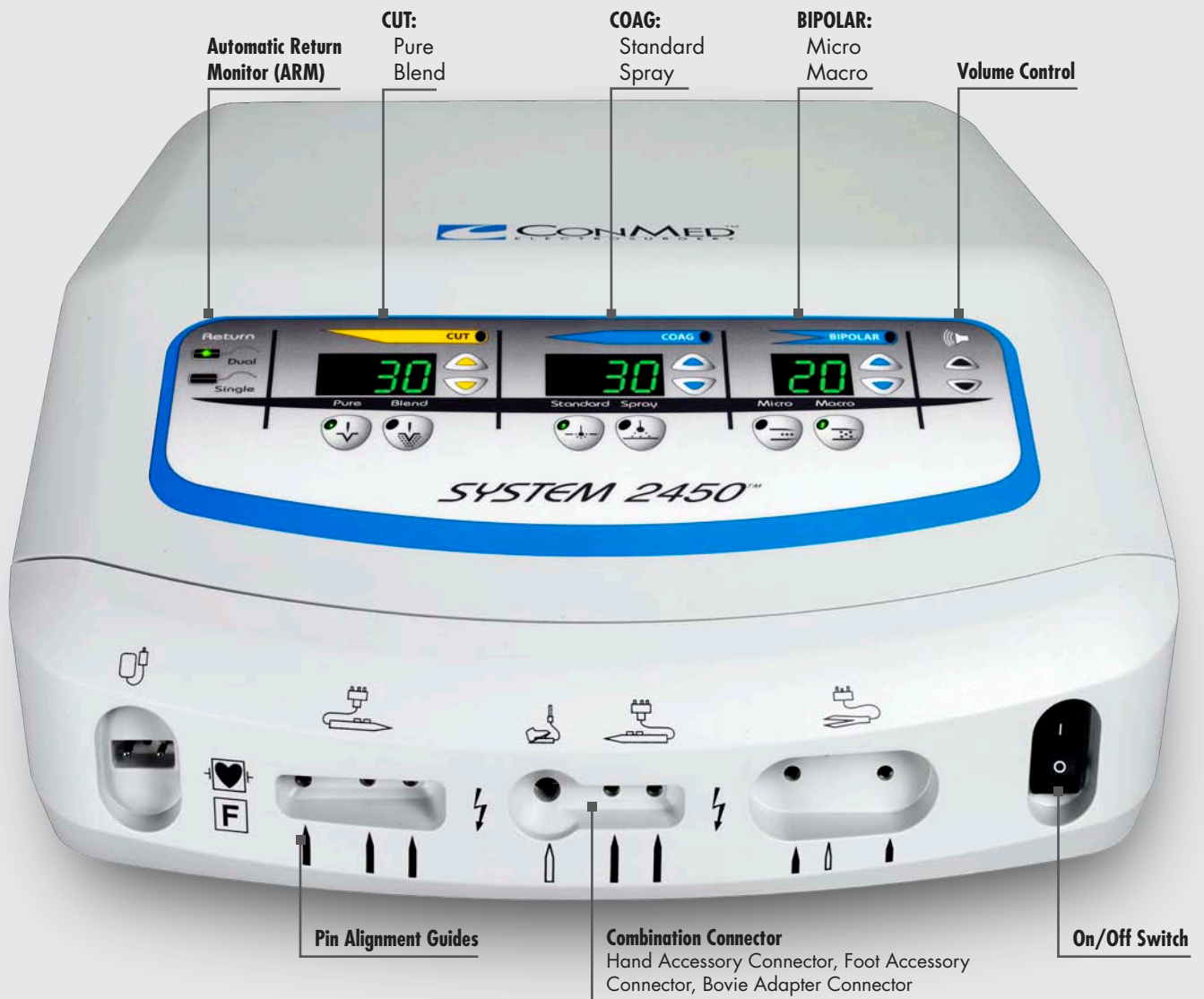
Patient safety is always a priority. The System 2450 ESU features ConMed's Automatic Return Monitor (ARM) technology designed to alert the operating room staff if the patient/grounding pad contact is compromised when used with compatible dual pad dispersive electrodes. ARM helps to reduce the risk of pad site burns.

When a properly functioning single dispersive electrode is connected to The System 2450, the ARM verifies the connections between the ESU, the dispersive electrode cable, and the dispersive electrode.



## Features

- » Dynamic Response Technology: The most advanced generator design available
- » Continuous ARM safety monitoring
- » Automatic programming restores The System 2450 to the last settings used
- » One handswitch/footswitch combination jack and a separate handswitch jack allows for multiple accessory connections
- » Bovie-style footswitch connector incorporated into the monopolar handswitch/footswitch jack
- » A serial interface port enables advanced communications between The System 2450 and compatible robotic surgical systems or O.R. integration systems
- » Integrated interface for activation of a smoke evacuator
- » Front panel volume control



## Product Specifications

Mode	Watts	Max Peak Voltage	Crest Factor (Typical)	Frequency (KHz)
<b>Monopolar</b>				
Pure Cut	300	1100	1.4 - 2.0	390 - 410
Blend Cut	200	1200	2.0 - 2.6	390 - 410
Hi Blend Cut	200	1300	2.2 - 2.9	390 - 410
Standard Coag	120	3200	5.6 - 6.6	485 - 505
Spray Coag	80	5000	7.5 - 9.5	485 - 505
<b>Bipolar</b>				
Micro Bipolar	70	150	1.4 - 2.0	390 - 410
Macro Bipolar	70	450	1.4 - 2.0	390 - 410

Output Control System	Energy Synchronous Processing
Previous Setting Memory	Yes
Warranty	2 Yrs Standard - 7 Yrs Extended
Contact Quality Monitoring System (CQM)	ARM
CQM Range	10-150 Ohms
Cooling System	Convection
Self Diagnosis	Yes
Technology	Isolated RF Output
Duty Cycle	15 Seconds On, 30 Seconds Off
Compliant with applicable IEC 60601 series standards	

**Weight** 32 lbs (14.5 kg)

**Dimensions** H: 7.0" (17.8 cm)  
W: 14.4" (36.6 cm)  
D: 21.5" (54.6 cm)

Please contact your local CONMED Representative for information on our family of generators and our accredited training programs.

*Technical Specifications subject to change*

## Ordering Information

Product No.	Product Description
60-2450-100	System 2450™ ESU (100V)
60-2450-120	System 2450™ ESU (120V)
60-2450-220	System 2450™ ESU (220V)
60-2450-230	System 2450™ ESU (230-240V)
60-7152-001	System 2450™ Cart
60-6963-001	Stacking Adapter for System 2450™
60-6700-001	Monopolar Footswitch with 15 ft. cable
60-5103-002	Bipolar Footswitch with 10 ft. cable
60-2451-ENG	Operator's Manual, System 2450™ ESU
60-2453-001	In-Service CD, System 2450™ ESU
60-2454-ENG	Service Manual, System 2450™ ESU
60-8050-001	System 1200™ Smoke Evacuator, 120V
60-8055-001	System 1200™ SmartFilter™ VLSI Grade ULPA rated (2 each)



SYSTEM 2450™ | Simple Yet Sophisticated

### CONMED CORPORATION PRODUCT AREAS:

ARTHROSCOPY • ELECTROSURGERY • ENDOSCOPY • ENDOSURGERY • GASTROENTEROLOGY • INTEGRATED SYSTEMS • PATIENT CARE • POWERED INSTRUMENTS • PULMONOLOGY



525 French Road  
Utica, NY 13502  
(315) 797-8375  
Customer Service: 1-800-448-6506  
FAX: 1-800-438-3051  
International Sales: +1(315) 797-8375 • FAX: +1(315) 735-6235  
email: [info@mail.conmed.com](mailto:info@mail.conmed.com)  
[www.conmed.com](http://www.conmed.com)

